

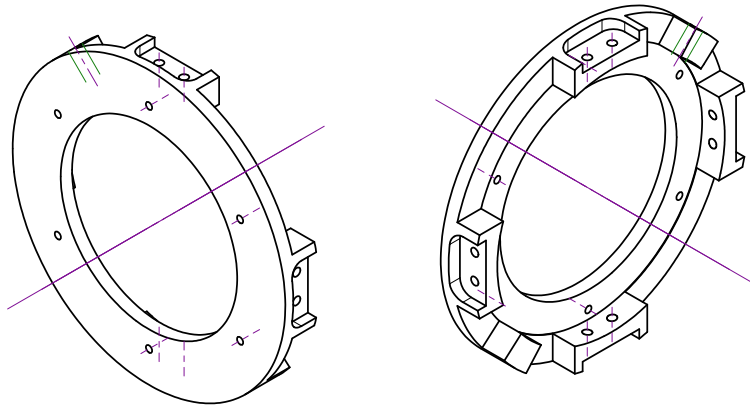


REVISIONS

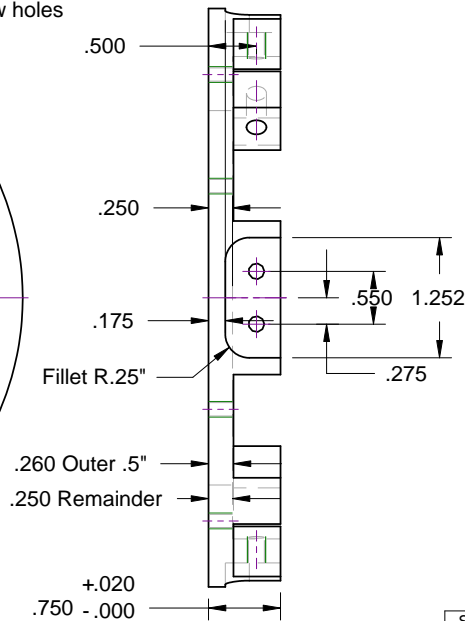
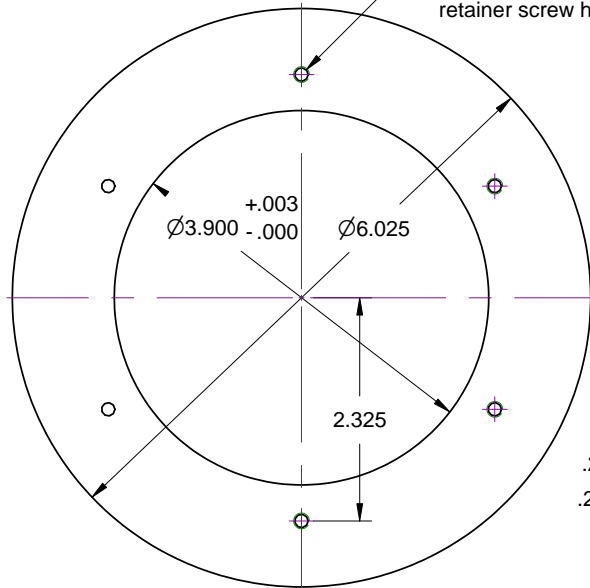
ZONE	REV	DESCRIPTION	DATE	APPROVED
------	-----	-------------	------	----------

# Sustainer Bottom Centering Ring

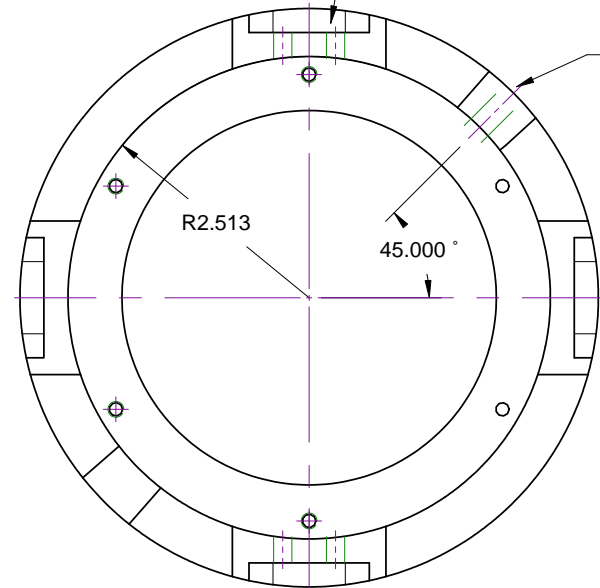
Ver.2 removes the 1/2" flange at the bottom of the ring.



6x 8-32 UNC  $\nabla$  THRU  
Aeropack motor  
retainer screw holes



8x 10-32  $\nabla$  THRU



1/4"-20  
 $\nabla$  THRU  
Rail button  
screw hole

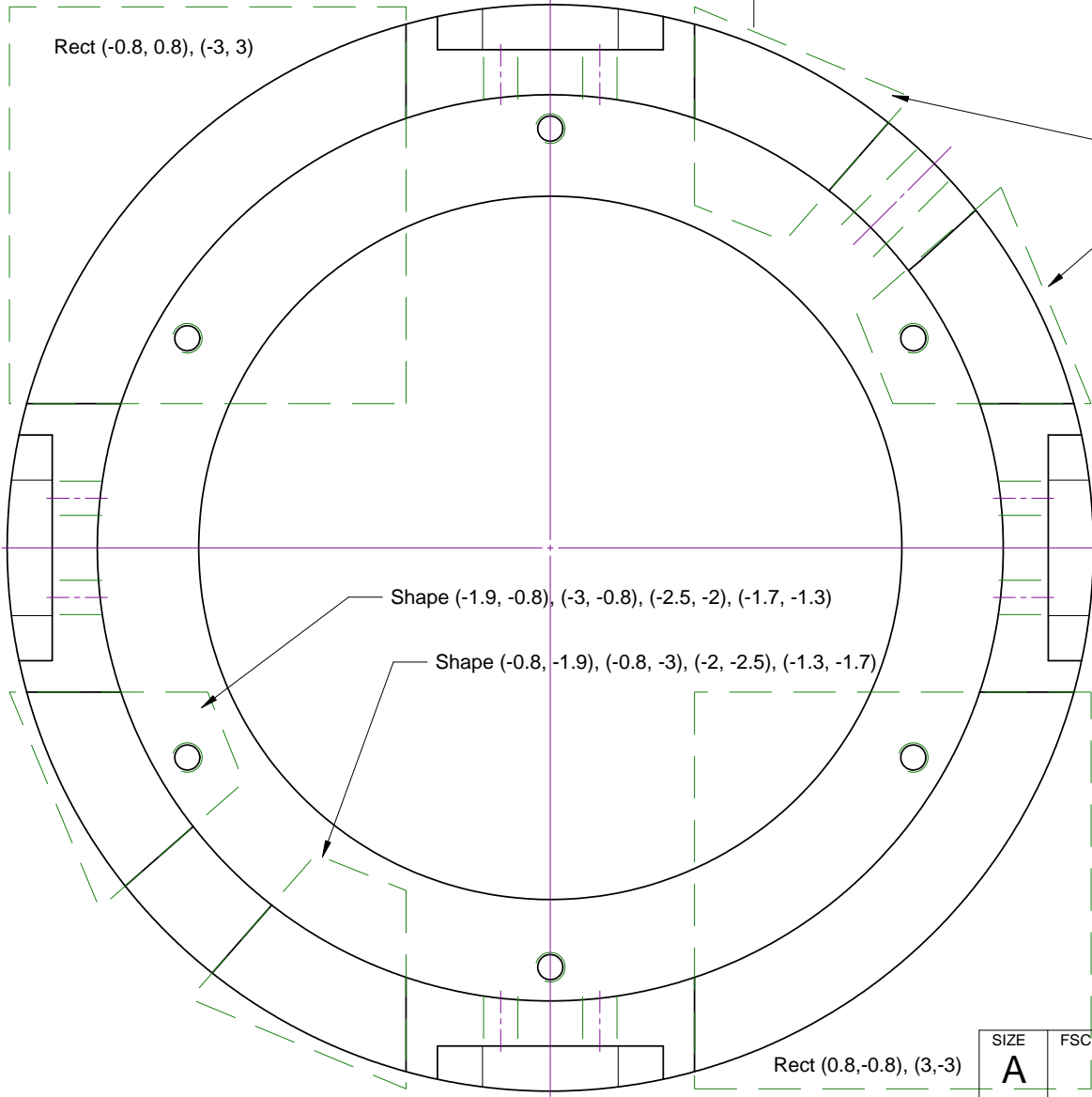
SIZE <b>A</b>	FSCM NO.	DWG NO.	REV
SCALE 1:2	B. Feretich & G. Saviers		SHEET



REVISIONS				
ZONE	REV	DESCRIPTION	DATE	APPROVED

# Sustainer Bottom Centering Ring

(Milled pockets)



Shape (0.8, 1.9), (0.8, 3), (2, 2.5), (1.3, 1.7)

Shape (1.9, 0.8), (3, 0.8), (2.5, 2), (1.7, 1.3)

All pockets are milled to +0.01 above inner ring surface.

SIZE <b>A</b>	FSCM NO.	DWG NO.	REV
SCALE	B. Feretich & G. Saviers		SHEET