

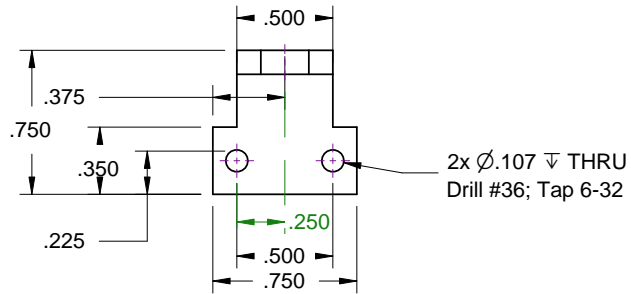


REVISIONS

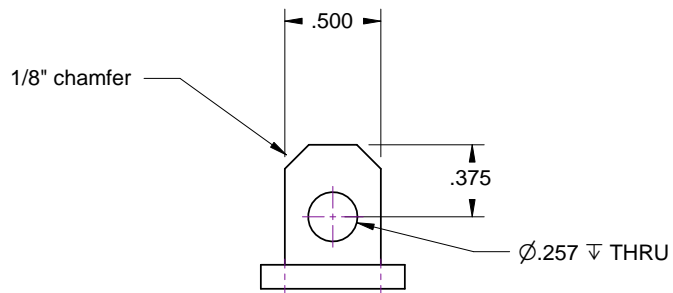
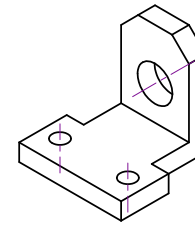
ZONE	REV	DESCRIPTION	DATE	APPROVED
------	-----	-------------	------	----------

# Angle Bracket

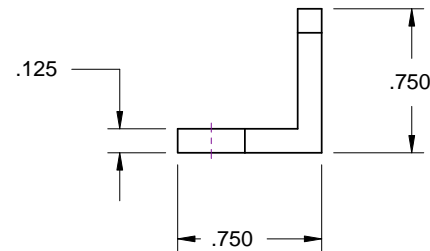
Mounts G10-Board to Bottom Bulkhead.  
Fastened to bulkhead via  
the 1/4" threaded shafts.



Tapped holes for 6-32 screws. (#36 drill)



Free fit hole for 1/4"x20 threaded shaft.



SIZE <b>A</b>	FSCM NO.	DWG NO.	REV
SCALE 1:1	B. Feretich & G. Saviers		SHEET

